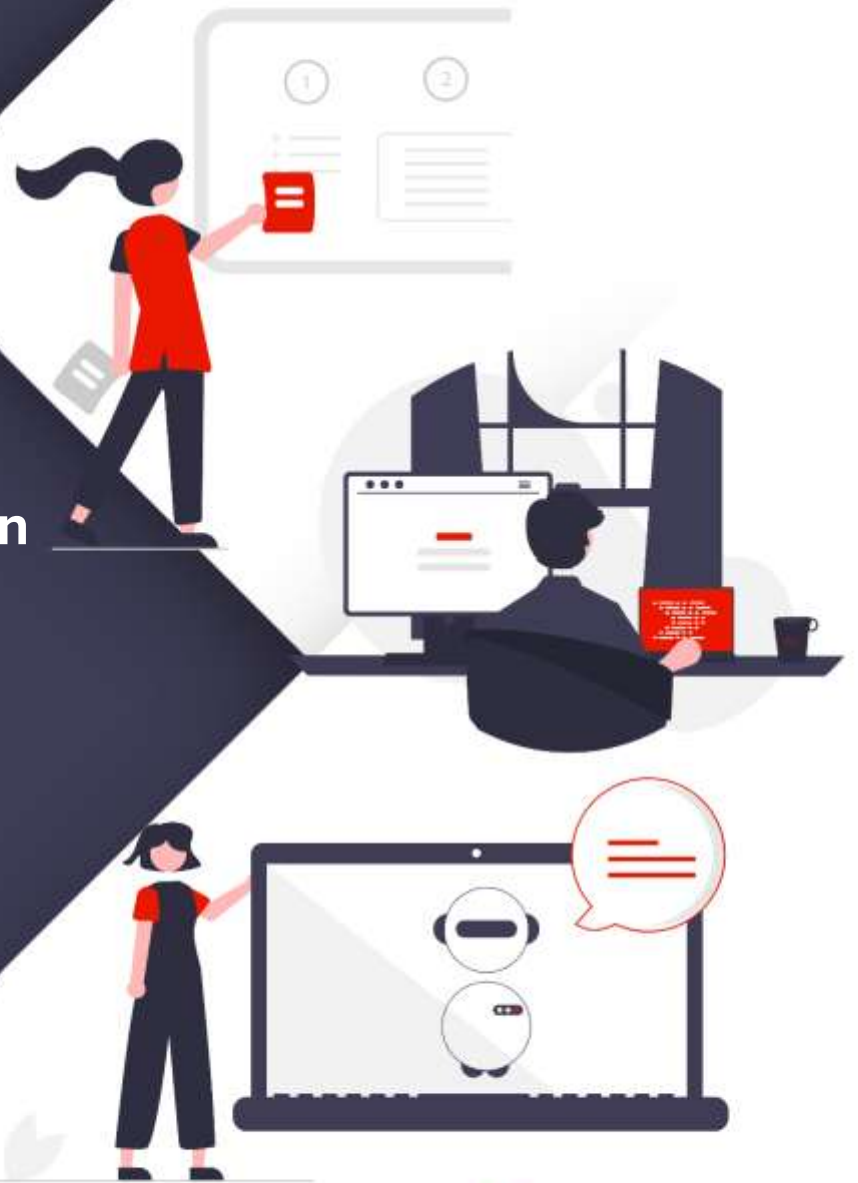


Artificial Intelligence in **COOPERA**



Embedding intelligence into every process, decision, and workflow.

Artificial Intelligence in Coopera is more than an add-on — it is a core capability woven into the automation fabric. From content understanding to predictive analytics, AI enhances every stage of the business process lifecycle, helping organizations act faster, smarter, and with greater accuracy.

Coopera's AI-Driven Approach

- **Content Intelligence:** Extract, classify, and summarize information from documents, emails, and records.
- **Natural Language Processing (NLP):** Enable smarter interactions with unstructured data and conversational workflows.
- **Predictive Analytics:** Forecast outcomes, detect anomalies, and support proactive decision-making.
- **Decision Automation:** Apply machine learning models to automate approvals, risk scoring, and policy enforcement.
- **AI Orchestration:** Integrate third-party AI services and models into workflows seamlessly.

Use Cases



Finance

Intelligent documents are captured for invoices, predictive fraud detection.



Healthcare

Automated medical record classification and AI-assisted diagnostics support.



Public Sector

Smart citizen service routing and automated regulatory checks.



Insurance

AI-driven claims triage and anomaly detection.



Enterprise Operations

Intelligent HR resume screening, email classification, and workflow optimization.

RNTrust (RECRO-NET Middle East FZ LLC)

1905A, Business Central Towers, Dubai Media City

Dubai, UAE, PO Box 503012 U.A.E

+971 800-RNTrust (7687878) | +971 4 4347599 | sales@rn-trust.com

www.rn-trust.com | www.coopera.com

Offices: Abu Dhabi | Bengaluru | Belgrade | Boston | Naples | Paris | Riyadh | Zagreb